

KENTUCKY ARCHIVES
GENWEB ~~SEMINAR~~ Project
JULY 10, 1998

CARROLL COUNTY PUBLIC LIBRARY



3 0347 1001 58418



The KyGenWeb Project



Proud to be part of
The USGenWeb Project

In March and April, 1996, a group of genealogists organized the Kentucky Comprehensive Genealogy Database Project. The idea was to provide a single entry point for all counties in Kentucky, where collected databases would be stored. In addition, the databases would be indexed and cross-linked, so that even if an individual were found in more than one county, they could be located in the index.

At the same time, volunteers were found who were willing to coordinate the collection of databases and generally oversee the contents of the web page. Required elements of a county page included offering queries and lookups.

This project became known as KyGenWeb.

Within just a few months, most of the Kentucky counties had a volunteer coordinator, and it was decided to expand the project to include the other states... and USGenWeb was born, and a short time later WorldGenWeb.

Today, two and a half years later, it is easier than ever to research your family while sitting at your computer at home.

The USGenWeb Project has expanded to include several special projects...

- The USGenWeb Archives... where digitized and transcribed text files are available for free viewing and/or downloading to your computer.
 - The USGenWeb Tombstone Project... recording the tombstones of the US.
 - The USGenWeb Census Project... transcribing the Federal Census.
 - The USGenWeb Lineage Project ~ The purpose of this project is to provide a place to list researchers who are looking for descendants of one particular ancestor who must have lived in the US at one time and must have been born between January 1 1826 and December 31 1850. Includes links to researchers homepages
 - USGenWeb Kids' Page... a place for our youth who are interested in their ancestry, or are working on a class history project.
-

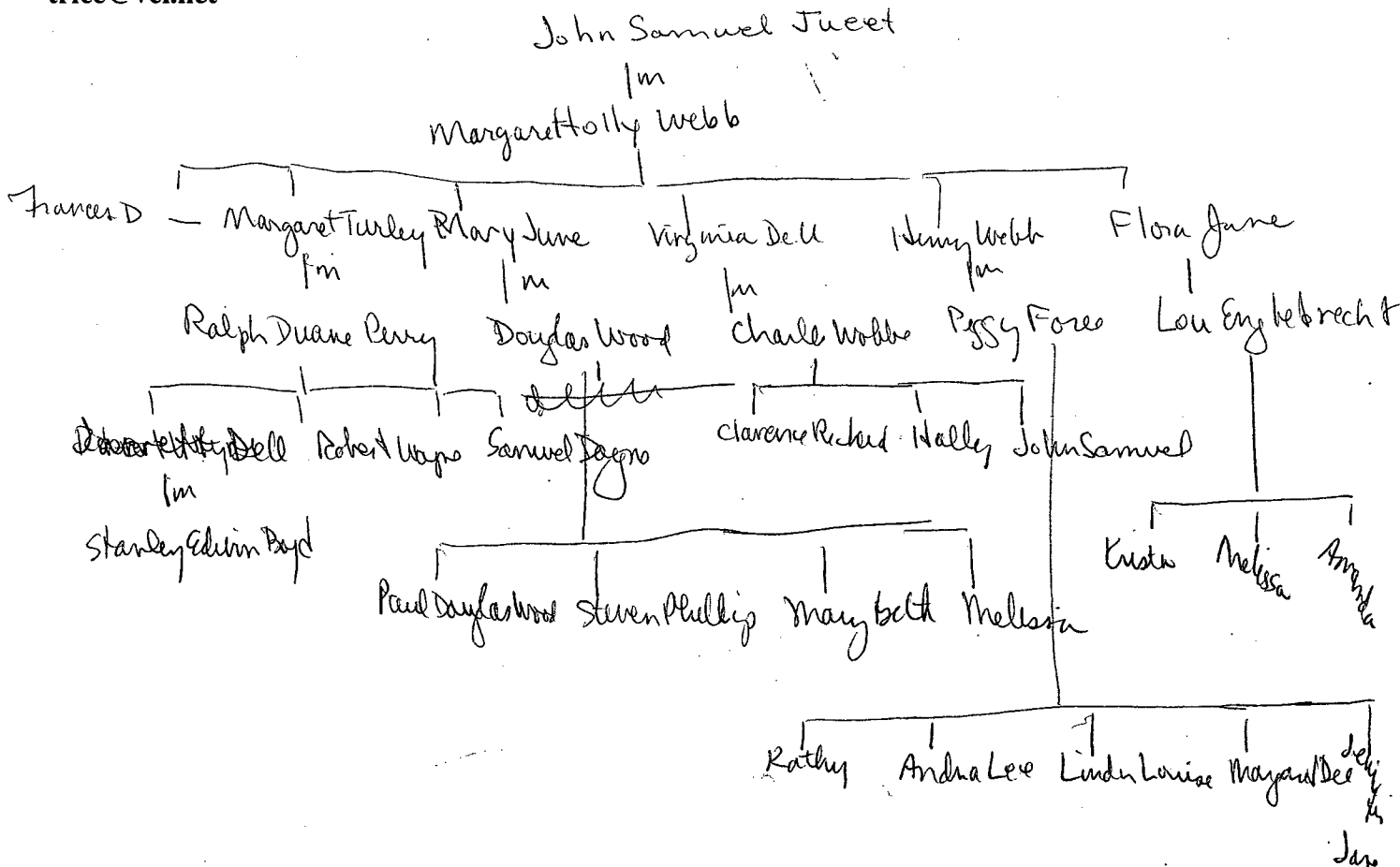
KyGenWeb State Page: <http://www.rootsweb.com/~kygenweb/index.html>

Links to:

- **The Kentucky Counties: County pages, coordinators names and email addresses, and lots of information.**
- **KyGenWeb Archives: Military Records, Bibles, Queries, Tax Lists, Pension Records, Census Abstracts, Obituaries, Marriage Records, Death Certificates, and much more.**
- **Kentucky Help Pages: Links to maps, atlases, lookup volunteers, pages on the web with Kentucky connections on them, Civil War queries and help, Publishers with Kentucky books for sale, Social Security Death Index, and much more.**
- **The USGenWeb Project and its special projects and the rest of the world.**

I invite you to visit the KyGenWeb and USGenWeb Projects during your search for your ancestry. Post your queries and read those posted by other researchers; use the various search engines to help in your search; request a lookup, or volunteer to do lookups in books or other sources you own; transcribe those deeds, wills, obits, pension records, marriage records, etc. that you have accumulated over the years and submit them to the county coordinators or the archives; volunteer to help on one of the special projects, or to host one of the counties that needs a county coordinator.

If you need assistance getting started in Kentucky, feel free to send me an email at: trice@vci.net



The KyGenWeb Project

GenConnect



[County Selection Page](#)

[County Coordinators](#) ~ Email, birthdays, anniversaries.

Please help Sandi
Gorin

[Orphans Page](#) ~ Interested in hosting a county?

[Kentucky Bibles](#)

[Kentucky Family Books](#)

[Kentucky Book & Magazine Publishers](#)

[Read Ky Queries](#) ~ Jo Thiessen's Query Quick Link Page

[Ky Civil War Page](#)

[Kentucky Research Helps and Links](#) ~ Links to maps, vital stats, etc.

[Kentucky Mail Lists](#)

[Meet the KyGenWeb Support Staff](#)

[Formation of Ky Counties](#)

[Kentucky Konnections](#) ~ Homepages with Kentucky connections.

[Kentucky Page Update Notification](#)

You are the 178655th visitor since 11-12-97.



[Index](#) to Ky counties using GenConnect for queries, obituaries and biographies.



[State Selection Page](#)

["Quick Links"](#) to the other states.

[How it all began.](#)

[Requirements for county pages](#)

[Everton Publishers Review of the Project](#)

[USGenWeb Military Links](#)

[The Tombstone Transcription Project](#)



[USGenWeb Archives - Table of Contents](#)

[Kentucky Archives - Table of Contents](#)



[Ky-Footsteps ~ Submit your Kentucky information to the archives.](#)

[Search the Archives Digital Library](#)



[World Selection Page](#)



[USIGS ~ United States Internet Genealogical Society](#)



Nancy Trice, State Coordinator

trice@vci.net

Pam Carey Durstock, Asst. State Coordinator

durp@one.net

For a text-only version of this page, click [here](#).



Welcome to

*The USGenWeb Project

**** Volunteers dedicated to free online information ****

Links for The USGenWeb Project:

- **Links to States:**
 - Select from:
 - [Map](#)
 - [Table](#)
 - [Text-Only](#)
- **Special Projects**
 - **Archives Project**
 - [ftp Archives](#)
 - [Census Project](#)
 - [Tombstone Project](#)
 - **Lineage Project**
 - **The USGenWeb Kidz Project**
- **[Information for Researchers](#) - hints on how to begin and links to helpful sites**
- **[Information for Current and Prospective Volunteers](#) - web site standards and guidelines, and other useful info**
- **[About the Project](#) - history, who's who, memorials, and much more**
- **[Announcements](#) - official project announcements/business**
- **[Friends](#) - a new area devoted to those who wish to show their appreciation of The USGenWeb Project**

This is the home page for **The USGenWeb Project**. Consisting of a group of volunteers working together to provide Internet websites for genealogical research in every county and every state of the United States, the **Project** is non-commercial and fully committed to free access for everyone.


Organization is by county and state, and this website provides you with links to all the state websites which, in turn, provide gateways to the counties. **The USGenWeb Project** also sponsors important special projects at the national level; this website provides an entry point to all of those pages, as well.

Although the basic unit of organization for **The USGenWeb Project** is at the county level, state websites include very important information as well, including such resources as postings of unknown county queries, family reunion bulletin boards, state histories, and maps showing the changing county boundaries, among others. Many states also have ongoing projects as diverse as the transcription of Civil War regiments or the reuniting of families with lost photos, bibles, etc.

As you explore the state and county websites, you will see considerable variation as each page or database is the creation, property and responsibility of an individual volunteer. But, you will also find that all of the counties will provide links for you to post queries, access the state's home page and access the archives. All of the volunteers who make up **The USGenWeb Project** are very proud of this endeavor and hope that

you will find their hard work both beneficial and rewarding.

Special thanks to all of the hosts/sponsors who provide free server space for the many websites that make up **The USGenWeb Project**. This website is hosted by **RootsWeb**; please consider visiting them to find out how you can help keep genealogy on the Internet free and available to everyone.

 **Another important genealogical undertaking:** The **WorldGenWeb Project** has the objective of placing genealogical information for every country in the world, and every region within each country, online. If you are researching your emigrant ancestors, then this is a must-see website.

Acknowledgments: Thanks to **Angela Place** for creating the background image especially for this website and to **Don Spidell** who created the patriotic bar and graciously allowed us to borrow it. **The USGenWeb Project official logo**, which has been in use for some time, was designed and created by **Linda Cole**. And, the great United States map we all rely on for easy access to the state websites is thanks to **Dale "Doc" Schneider**.

*The names, **The USGenWeb Project** and **XXGenWeb** (where XX is the two-letter abbreviation for each state), are reserved exclusively for use by **The USGenWeb Project**.

The USGenWeb Project is not affiliated with USGenWeb, Inc.

Official Project Statement

Feedback:

The links below are to report problems and/or provide comments or suggestions (as detailed in each).

Questions regarding your personal genealogy/research cannot and will not (due to limited volunteer time) be answered. Please visit our Information for Researchers pages where you can find suggestions for how to start your research or answers to questions about researching on the internet, as well as many helpful hints and valuable information.

Questions or comments concerning a specific county or state website should be directed to that specific county or state.

To find out how to volunteer for the project, share personal research, what county a town or city is in, etc.; as well as what to do about problems linking to websites, error messages, etc., please visit our Answers to Common Problems/Questions page.

If you have comments about **The USGenWeb Project** or would like to report administrative-type problems, please email the **National Coordinator**. If you have a complaint regarding a specific website which cannot be addressed by contacting the coordinator in charge, please include the URL address when emailing the National Coordinator. Thanks!

If you have comments and/or suggestions about this particular website, please contact the **Website Committee**.

The USGenWeb Project
Founded 1 June 1996

Copyright © 1996, 1997, 1998, The USGenWeb Project
Megan Zurawicz, National Coordinator, pigolit@ix.netcom.com

URLs:

<http://www.usgenweb.com>

<http://www.usgenweb.org>

<http://www.usgenweb.net>

[ProjectHistory and Policy](#) | [Coordinator Information](#) | [Clickable World Map](#)

WorldGenWeb

Connecting the World Genealogical Community

Project Mission

The WorldGenWeb Project was created in 1996 by Dale Schneider in an effort to answer the ever growing needs of genealogists world-wide who were trying to research their ancestors. The goal of the WorldGenWeb Project is to have every country in the world represented by an online website and hosted by researchers who either live in their own country or who are familiar with their country's resources.

General Information

The WorldGenWeb Project is divided into 11 world regions. Each region is divided up by countries and each country is divided into individual provinces, states, or counties.

Today, more than 50% of all the world countries are hosted. Click on a regional genweb link below and visit your country of interest.

If you are interested in hosting a country which is 'up for adoption' or are interested in being a temporary host, please contact the regional coordinator where the country is located or the [WorldGenWeb Board](#).

For [Tips on How to Post a WorldGenWeb Query](#) click here. [Regional GenWebs](#)

Regional GenWebs

[AfricanGenWeb HomePage](#)

[AsiaGenWeb HomePage](#)

[CanadaGenWeb HomePage](#)

[CaribbeanGenWeb Home Page](#)

[CentralAMGenWeb HomePage](#)

[EuroGenWebHomePage](#)

[MexicoGenWeb HomePage](#)

[MidEastGenWeb HomePage](#)

[PacificGenWeb HomePage](#)

[SouthAMGenWeb HomePage](#)

[USGenWeb HomePage](#)

How To Adopt Information

If you are interested in Adopting a WorldGenWeb project site, you need to contact the Regional Coordinator or the WorldGenWeb Webmaster.

It is recommended that you know HTML or how to use a web editor and how to ftp to the internet. You do NOT have to be fluent in the language of that country in order to host it. Please be certain to state the country you're interested in. Please review the requirements and suggestions for country pages, located [HERE](#).

How To Post A WorldGenWeb Query

The WorldGenWeb Project maintains query pages or boards for every country that is hosted. Each country is free to maintain their query pages as they choose. Some prefer that you send your query via email, some use a mailmerge form and others participate in the GenConnect System ([Query Web Boards](#)).

To post a query to a specific country or county (region) please visit that website directly and follow the instructions provided by the coordinator.



To see an index of participating GenConnect sites, [visit the GenConnect World Index](#). You can also search the system for your surname or country by [visiting the GenConnect Global Search Engine](#).

WorldGenWeb File Archives

The [WorldGenWeb File Archives](#) are now online and contain some really great text files that are *FREE* and *DOWNLOADABLE*. Visit this site today -- and make sure to bookmark the page - it is updated frequently!

Acknowledgements

The WorldGenWeb Project is a not-for-profit volunteer genealogical organization dedicated to the free access of genealogical information by anyone in the world.



The WorldGenWeb Project is grateful to the fine folks at [The RootsWeb Data Cooperative](#), Frazier Park, CA., for their willingness to host this website and the WorldGenWeb File Archives.

Questions or comments about this page or about this project should be addressed to the [WorldGenWeb Board](#).

The WorldGenWeb Project has welcomed over 3 million visitors to this project website. You have been the [\[46429th\]](#) visitor since this page was moved to it's new home in January of 1998.

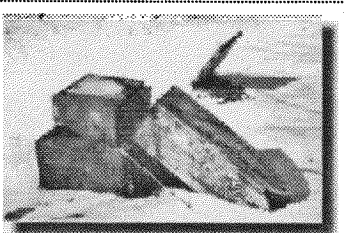
This page was last updated on: Thursday, 25-Jun-98 10:29:17 PDT

The page was created by the WGW Board and contributions from Carol Hepburn for the WorldGenWeb project.



THE TOMBSTONE TRANSCRIPTION PROJECT

We live as long as we are remembered.....Old Russian Proverb

About This Project	 BRIDGEPORT PIONEER CEMETERY BRIDGEPORT, NEW YORK Endangered cemeteries and appalling vandalism. Read about it!	View The Registry
What Can YOU Do?		Register A Cemetery
How To Join		Related Links
Getting Started		Veteran's Program
Eagle Scout Project		About USGenWeb



[Visit USGenWeb](#)

[Visit The Archives](#)

[Next Page](#)

[View Registry](#)

You are our **86311th** visitor since we added this counter on 2/15/98 -- thanks for stopping by!



Friends of Kentucky Public Archives, Inc.

P.O. Box 4224

Frankfort, KY 40604

The Fourteenth Annual Kentucky Archives Institute

Sponsored by:

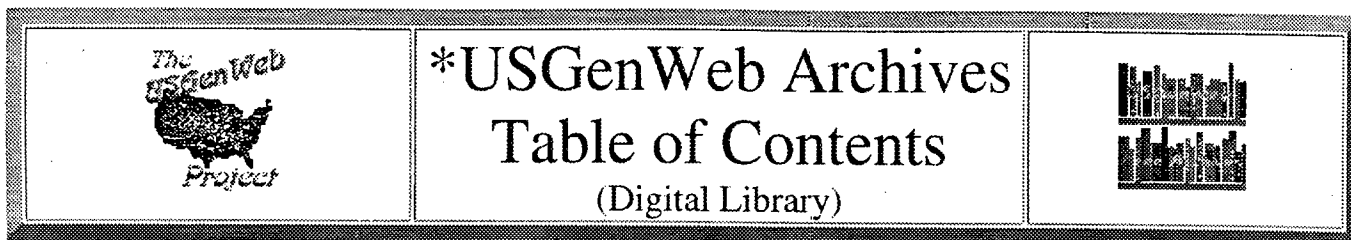
*Friends of Kentucky Public Archives, Inc., and
Public Records Division, Kentucky Department for Libraries and Archives*

July 10, 1998

Archives Research Room, First Floor
Kentucky Department for Libraries and Archives
300 Coffee Tree Road
Frankfort, Kentucky

Archival, Genealogical, and Historical Information on the Internet

- | | |
|---------------|--|
| 8:30 - 9:00 | Registration/Pastries |
| 9:00 - 9:15 | Welcome |
| 9:15 - 10:15 | Using the Internet for Genealogical Research
-Roseann R. Hogan, Author: <i>Kentucky Ancestry</i> |
| 10:15 - 10:45 | Break |
| 10:45 - 11:45 | The KyGen Web Project
-Nancy Trice, KyGen Web State Coordinator |
| 11:45 - 12:45 | Lunch (Lobby, First Floor) |
| 12:45 - 1:30 | KDLA's Online Catalog of Archival Materials
-Jane Minder, KDLA staff |
| 1:30 - 2:15 | Using KDLA's Home Page
-Barbara Teague, KDLA staff |
| 2:15 - 2:30 | Break |
| 2:30 - 3:30 | Free Time on the Internet
-Staff Instruction Available |



The actual URL for this site is www.rootsweb.com/~usgenweb. If you reached us via a commercial site with frames, please accept our apologies, and be sure to bookmark the correct URL.

The USGenWeb Project is not affiliated with USGenWeb, Inc.

USGenWeb Archives Search Engine

NOTICE: Printing the files within by non-commercial individuals and libraries is encouraged, as long as all notices and submitter information is included. Any other use, including copying files to other sites requires permission from the submitters PRIOR to uploading to any other sites. We encourage links to the state and county tables of content.

[USGW Archives Census Project](#) | [USGW Tombstone Transcription Project](#) | [WorldGenWeb Archives Project](#)



The space for these files is freely made available by [Rootsweb Genealogical Data Cooperative](#).

Please support them by becoming a member, and let them know you use this digital library.

TABLE OF CONTENTS BY STATE	FTP DIRECTORY BY STATE	FILE MANAGER
<u>Alabama Archives Table of Contents</u>	<u>Alabama FTP Archives</u>	Lygia Cutts
<u>Alaska Archives Table of Contents</u>	<u>Alaska FTP Archives</u>	Sue Baker
<u>Arizona Archives Table of Contents</u>	<u>Arizona FTP Archives</u>	<u>Donald L. Spidell</u>
<u>Arkansas Archives Table of Contents</u>	<u>Arkansas FTP Archives</u>	Peggy Rogers
<u>California Archives Table of Contents</u>	<u>California FTP Archives</u>	Richard S. Wilson
<u>Colorado Archives Table of Contents</u>	<u>Colorado FTP Archives</u>	Teresa Davis
<u>Connecticut Archives Table of Contents</u>	<u>Connecticut FTP Archives</u>	George Waller
<u>Delaware Archives Table of Contents</u>	<u>Delaware FTP Archives</u>	Teresa Kelley
<u>District of Columbia Archives Table of Contents</u>	<u>District of Columbia FTP Archives</u>	Yvonne James-Henderson
<u>Florida Archives Table of Contents</u>	<u>Florida FTP Archives</u>	Cathy Burnsed

Georgia Archives Table of Contents	Georgia FTP Archives	Carla Cegielski
Hawaii Archives Table of Contents	Hawaii FTP Archives	Kevin Fraley
Idaho Archives Table of Contents	Idaho FTP Archives	Donovan Yingst
Illinois Archives Table of Contents	Illinois FTP Archives	Terasa Hodges
Indiana Archives Table of Contents	Indiana FTP Archives	Fred Finkbiner
Iowa Archives Table of Contents	Iowa FTP Archives	Celene Eliason
Kansas Archives Table of Contents	Kansas FTP Archives	Kenneth Thomas
Kentucky Archives Table of Contents	Kentucky FTP Files	Polly A. Menendez
Louisiana Archives Table of Contents	Louisiana FTP Archives	Jan Batte Craven
Maine Archives Table of Contents	Maine FTP Archives	David Colby Young Carol LaRue
Maryland Archives Table of Contents	Maryland FTP Archives	Carol Hepburn
Massachusetts Archives Table of Contents	Massachusetts FTP Archives	George Waller
Michigan Archives Table of Contents	Michigan FTP Archives	Denny Zank
Minnesota Archives Table of Contents	Minnesota FTP Archives	Terri Shipp
Mississippi Archives Table of Contents	Mississippi FTP Archives	Ken Hollingsworth
Missouri Archives Table of Contents	Missouri FTP Archives	Yvonne James-Henderson
Montana Archives Table of Contents	Montana FTP Archives	Jana Sanders
Nebraska Archives Table of Contents	Nebraska FTP Archives	Wendy Anderson
Nevada Archives Table of Contents	Nevada FTP Archives	CJ Prime
New Hampshire Archives Table of Contents	New Hampshire FTP Archives	David C. Young
New Jersey Archives Table of Contents	New Jersey FTP Archives	Renee Dauvin
New Mexico Archives Table of Contents	New Mexico FTP Archives	Marceline Beem
New York Archives Table of Contents	New York FTP Archives	Chris Andrlle
North Carolina Archives Table of Contents	North Carolina FTP Archives	Yvonne James-Henderson
North Dakota Archives Table of Contents	North Dakota FTP Archives	Joe Zsedeny
Ohio Archives Table of Contents	Ohio FTP Archives	Gwen Oliver
Oklahoma Archives Table of Contents	Oklahoma FTP Archives	Kay Mason

Oregon Archives Table of Contents	Oregon FTP Archives	Renee Dauven
Pennsylvania Archives Table of Contents	Pennsylvania FTP Archives	Dorothy Elwood
Rhode Island Archives Table of Contents	Rhode Island FTP Archives	Susan W. Pieroth
South Carolina Archives Table of Contents	South Carolina FTP Archives	Victoria Proctor
South Dakota Archives Table of Contents	South Dakota FTP Archives	Joy Fisher
Tennessee Archives Table of Contents	Tennessee FTP Archives	Michael DeLoach
Texas Archives Table of Contents	Texas FTP Archives	Candy Grubb
Utah Archives Table of Contents	Utah FTP Archives	Wendy Scott
Vermont Archives Table of Contents	Vermont FTP Archives	David Colby Young
Virginia Archives Table of Contents	Virginia FTP Archives	Linda Russell Lewis Harriet Welch
Washington Archives Table of Contents	Washington FTP Archives	Kevin Fraley
West Virginia Archives Table of Contents	West Virginia FTP Archives	Butch Miller
Wisconsin Archives Table of Contents	Wisconsin FTP Archives	Sue Baker
Wyoming Archives Table of Contents	Wyoming FTP Archives	George Langston

The USGenWeb Project makes no claims or estimates of the validity of the information submitted and reminds you that each new piece of information must be researched and proved or disproved by weight of evidence. It is always best to consult the original material for verification.

[About the The USGenWeb Archives](#) Scroll down to link to the state directories.

About the USGenWeb Archives

National Genealogical Society's [Statement about USGenWeb](#)

Many thanks to Dr. Brian Leverich and Karen Isaacson of [Rootsweb Genealogical Data Cooperative](#) for generously providing space on this server.

[Linda Russell Lewis](#), USGenWeb Archives Coordinator
[Joy Fisher](#), USGenWeb Archives Assistant Coordinator

The USGenWeb Digital Library (Archives) was developed to present actual transcriptions of public domain records on the Internet. This huge undertaking is the cooperative effort of volunteers who

either have electronically formatted files on census records, marriage bonds, wills, and other public documents, or are willing to transcribe this information to contribute.

Once the decision was made to develop a project, originally called "TimeToDo" Something, a call went out to volunteers who would be willing to transcribe primary records as a service to the Internet genealogical community, find a way to get them posted on the Internet, and allow the USGenWeb county hosts to store large files in a central location with a search engine. Space is donated by RootsWeb for storage of the files.


The table above is broken down by state. The left column represents the location of a table of contents for each state, with a brief description of each file and a direct link to it. The right column is the actual location of the archived files.

The USGenWeb Archives Digital Library was implemented in July 1996, and files are being added everyday. If you have transcriptions to contribute, please contact the person listed on the state table of contents page. Please read the Guidelines for file contributions. The files need to be in ascii text format, and will be converted by the state archive manager if in another form.

Return to the [USGenWeb](#).

*The names, **The USGenWeb Project** and **XXGenWeb** (where XX is the two-letter abbreviation for each state), are reserved exclusively for use by The USGenWeb Project.



Our **WEB**  indicates that you are visitor # **683996** to this page.

You are the 375568th visitor.

	<p align="center">GenRing</p> <p align="center"><i>Linking the World of Amateur Genealogists</i></p> <p align="center">This GenRing site is maintained by the Coordinator of USGenWeb Archives.</p> <p align="center">[Prev Skip It Next 5 Random Next]</p> <p align="center">Want to join GenRing? Click here for information.</p>	
<p align="center">Visit GenRing!</p>		<p align="center">Next GenRing Page</p>



WELCOME

to the

USGenWeb Archives Census Project



The USGenWeb Archives Census Project was started in February 1997 with the mission of transcribing all of the US Federal Censuses, and putting them in the USGenWeb Archives. It's an ambitious project and we invite you to join us!

If you are here searching for already transcribed census information, we have links to our Project's already completed transcriptions and transcriptions that we have found on the Internet on our State Selection pages.

How can you help?

Transcribing the Census

Proofreading the Census

Technical Support

CENSUS TRANSCRIBERS

It's easy to join our project as a transcriber. Just go to our State Census Information page and pick a State, County and Year that you would like to transcribe. Then go to our Signup Area and sign up!

Depending on the year that you have signed up for, and your operating system, (i.e. Windows, MAC or UNIX) we will provide you with a Database program, either the Census Transcription Assistant (CTA) or the CART (Census Abstract Retrieval Tool), or a template.

You must obtain access to copies of the census that you have chosen. *We do not provide the census material.*

CENSUS PROOFREADERS

Every transcription must have a proofreader... and you can volunteer by going to the Signup Area, filling out the form, and noting in the comments area that you wish to proofread.

TECHNICAL SUPPORT

Technical support is necessary too. All of our Programs have been written by volunteers. Somewhere there is a MAC programmer who will write a MAC database program for us. We need people with computer skills to troubleshoot for our volunteers too.

USGenWeb Project Staff

- Kay Mason, National Coordinator
 - Holly Timm, Webmaster

USGenWeb Archives Census Project State Coordinators

- | | |
|------------------|-----------------------|
| • Ron Eason | • Kathy Gaines |
| • Marceline Beem | • Joni Jackson |
| • Donna Fares | • Linda Russell Lewis |
| • Holly Timm | • Whitney McLaughlin |
| • Sue Soden | • Laurie Miller |
| • Fred Finkbiner | • Jeri Shangle |

Technical Staff

- Phil Beshear- CART Programmer
- Gary Grigsby - Technical Support
- Ken Hollingsworth - Technical Support
- Melinda Parmer - Macintosh Technical Support
- John Rigdon - CTA Programmer
- Dale *Doc* Schneider - UNIX Programmer

The USGenWeb Archives Census Project was founded 22nd February 1997

National Census Project Coordinator - Kay Mason

Census Web Site Webmaster - Holly Timm

©1998 by Holly Timm solely for the use and benefit of the USGenWeb Project

The USGenWeb Project is not affiliated with USGenWeb, Inc.

Notice

The names USGenWeb Project, and the USGenWeb Census Project are reserved exclusively for use by The USGenWeb Project.

web space
generously
provided by
Rootsweb





USGenWeb Lineage Researcher Pages

Single Lineage Publication Page Hard Copy or Online

The Page for Hard Copy Publications

Get Listed on The Page (for Published Genealogy Books)

These folks want to get in touch with all those cousins, and double check information or add to it...

1. Follow Directions

Only Place a submission if this ancestor came to the US or was born in the US.
You must give me a State name or area like NE for Northeast.. or EC for East coast!!

ie... Ger>NE is ok.. or Ireland>PA is ok..

You must put a date.... even an approximate date...

ie.... abt. 1800

2. Only submit one (like)-Surname entry per section.

ie... If you have a Jones, Alfred before 1800 *and* a Jones, Tom before 1800,

Pick out the oldest or the one you like the most!

But DO NOT submit (two or more) Jones, before 1800 !!!

However,

If you have a Jones, Alfred before 1800,
and a Jones, Tom between 1800-1825, and a Jones, TooTall between 1826-1850
then submit all three of your Jones Lineage in the appropriate dates!

or

submit both or as many as you have...with different surnames!

ie... Jones, 1800 and Smith, 1800, and Brown, 1800.... ect..

3. Use the Uppercase Letters, to start a surname, or first name, but DO NOT use all CAPS or all Lowercase Letters!!

4. DO NOT use extra characters like { ... ect..

If there is a spouse, submit like this:

Jones, Alfred, (Smith, Sue) and I should put them like this:

Jones, Alfred

(Smith, Sue)

5. Have Fun and Happy Ancestor Hunting!

Single Lineage Researchers--1826-1851

looking for all descendants of one ancestor, who is either the earliest known US born ancestor who
was

born between 1826 and 1850, or the original immigrant ancestor born between 1826-1850.

To submit lineage information, [click here](#).

[A](#) ||| [B](#) ||| [C](#) ||| [D](#) ||| [E](#) ||| [F](#) ||| [G](#) ||| [H](#) ||| [I](#) ||| [J](#) ||| [K](#) ||| [L](#) ||| [Mc](#)
[M](#) ||| [N](#) ||| [O](#) ||| [P](#) ||| [Q](#) ||| [R](#) ||| [S](#) ||| [T](#) ||| [U](#) ||| [V](#) ||| [W](#) ||| [Y](#) ||| [Z](#)

Single Lineage Researchers--1800-1825

looking for all descendants of one ancestor, who is either the earliest known US born ancestor who
was
born between 1800 and 1825, or the original immigrant ancestor born between 1800-1825.

To submit lineage information, [click here](#).

[A](#) ||| [B](#) ||| [C](#) ||| [D](#) ||| [E](#) ||| [F](#) ||| [G](#) ||| [H](#) ||| [I](#) ||| [J](#) ||| [K](#) ||| [L](#) ||| [Mc](#)
[M](#) ||| [N](#) ||| [O](#) ||| [P](#) ||| [Q](#) ||| [R](#) ||| [S](#) ||| [T](#) ||| [U](#) ||| [V](#) ||| [W](#) ||| [Y](#) ||| [Z](#)

Single Lineage Researchers Before 1800

looking for all descendants of one ancestor, who is either the earliest known US born ancestor who
was
born before 1800, or the original immigrant ancestor born before 1800.

To submit lineage information, [click here](#).

[A](#) ||| [Ba-Bk](#) ||| [Bl-Bz](#) ||| [Ca-Cn](#) ||| [Co-Cz](#) ||| [D](#) ||| [E](#) ||| [F](#) ||| [G](#) ||| [Ha-Hh](#) ||| [Hi-Hz](#) ||| [I](#) ||| [J](#)
[K](#) ||| [L](#) ||| [Mc](#) ||| [Ma-Mh](#) ||| [Mi-Mz](#) ||| [N](#) ||| [O](#) ||| [Pa-Ph](#) ||| [Pi-Pz](#) ||| [Q](#) ||| [Ra-Rn](#) ||| [Ro-Rz](#)
[Sa-Sk](#) ||| [Sl-Sz](#) ||| [T](#) ||| [U](#) ||| [V](#) ||| [Wa-Wh](#) ||| [Wi-Wz](#) ||| [Y](#) ||| [Z](#)

The purpose of these pages is to provide a place to list researchers who are looking for descendants
of one
particular ancestor who must have lived in the US at one time and must have been born before
December 31 1850..

Links will include the ancestor's name, location, and dates, an email link to the researcher, and the
researcher's web page on the family, if there is one.

[My lineage submission didn't get posted---why?](#)

A [script](#) for family history interviews.

You are the [??many??](#)th person to visit this page since it moved to Rootsweb 9/18/97.

Last update--6 July 1998

This page created by Megan  and  Barry Zurawicz.

Maintained By:
[The Sam Sneed Family](#)



USGenWeb Kids' Page!

So you're exploring history in school by exploring your own history?

This is the place where:

- You can add links to useful sites!
- You can post queries, to see if anyone else is researching your ancestors!
- You can post questions, if you can't find the answer easily!

If you'd like your class listed on the site, just have your teacher send an email with his/her name, the name of your school, town, and state, and your grade level. Then when you send a message, be sure to sign it with your first name and last initial (for example, Linda W.), grade and school.

If you're a home schooler or just want to send in a query on your own, just put your grade, school (or home school association or "Home"), town and state on your query.

Either way, put in the subject line "kids' page", so I don't accidentally lose it.

This site can grow as much as it needs to....we can have separate areas for high school, junior high/middle school, and grade school if you want.

You can make this just a school project....or a lifelong interest....this is just a starting place.

Your webmaster

Currently participating schools:

Barbara George's Technology Classes, Fredericksburg, Texas

Links Provided By Students

None right now.

Links Provided For Students by Others

From Jo Thiessen: Slave Entries in Wills and Deeds

From Fred Bonjour: On Genealogy in Public Libraries

Read student queries

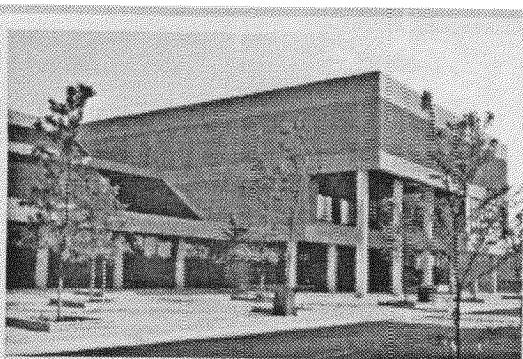
Explore genealogy in the US at USGenWeb

Explore genealogy in the rest of the world at WorldGenWeb

You are the 2114th visitor here!

last updated 13 may 1998





**Kentucky
Department
for Libraries
and Archives**

Serving Kentucky's Need To Know
An Agency of the Education, Arts & Humanities Cabinet

★ Introduction and Organization	★ Library Services
★ Archival Reference Services	★ Public Records Services
★ Events Calendar	★ Links to Other Sites
★ Kentucky Library Network	★ Index to KDLA Web
★ What's New	★ Monthly Pick

- [Monthly Pick](#) -- Archives Institute - July 10, 1998
- [Introduction and Organization](#)
- [Library Services](#)
- [Archival Reference Services](#)
- [Public Records Services](#)
- [Events Calendar](#)
- [Links to Other Sites](#)
- [Kentucky Library Network](#)
- [What's New](#)
- [Index to KDLA Web](#)

Kentucky Department for Libraries and Archives

300 Coffee Tree Road

P.O. Box 537

Frankfort, KY 40602-0537

Phone: (502) 564-8300

Fax: (502) 562-5773

[Comments for web administrator](#)

Pages last revised: June 3, 1998

Kentucky Department for Libraries and Archives

Archival Reference Services

- [Welcome to the Kentucky State Archives](#)
- [Hours for On-site Research](#)
- [How Information Requests Are Handled](#)
- [Major Research Collections](#)
- [Record Types and Availability](#)
- [Genealogical Reference Correspondence Policy](#)
- [Genealogical Reference Request Form](#)
- [Birth and Death Records Request Form](#)
- [Charges and Fees](#)
- [Research Publications Order Form](#)
- [State Publications Program](#)
- [Kentucky Guide Program](#)
 - [Search Kentucky Guide Database](#) NEW!
- [Other Archival Facilities with Kentucky Research Materials](#)
- [Professional Researchers List](#)

[[KDLA Home Page](#)| [Introduction](#)| [Library Services](#)| [Public Records Services](#)| [Events Calendar](#)| [What's New](#)| [Links](#)| [Index to KDLA Web](#)]

Last revised: February 17, 1998

Kentucky Department for Libraries and Archives

Records Types and Availability

- [Historical and Genealogical Sources](#)
- [United States Census for Kentucky](#)
- [Vital Statistics Records](#)
- [Civil War Records](#)
- [Naturalization Records](#)
- [Land Record Information](#)
- [Adoption Records](#)
- [African-American Sources](#)
- [Native American Sources](#)

[Return to Archival Reference Services Menu](#)

[Return to Department for Libraries and Archives Homepage](#)

Last revised: March 24, 1998

Kentucky Department for Libraries and Archives

Links to Other Sites

This recommended directory of sources primarily contains other institutions' list of lists for each subject area. The links are available for the following categories:

Archives and Preservation

These are lists of archival institutions, programs, professional organizations, databases, and Listservs around the world, the nation and in Kentucky. Some of the sites offer information on archives related topics such as disaster preparedness, preservation, and records management.

Children's Literature and Children's Librarians

Each of these lists contains a combination of book reviews, list of recommended publications and award winners, places for children to publish, bulletin boards, or Internet safety tips. The colorful sources which range from academic institutions, private companies, and state agencies serve librarians, children, parents, and educators.

Federal Government

These sites index U.S. and international government Internet sites alphabetically by agency and thereunder hierarchically, or by topical and geographical groupings. The GPO and GILS sites provide access to individual databases and publications. Statistical sources are also offered.

Genealogy

These links to genealogists, universities, libraries, government agencies, and archives help you trace your ancestors. Searchable databases, county and family histories and discussion groups provide information on births, death, and marriages, both in Kentucky and nationwide.

Government Technology

These commercial and governmental sites in Kentucky and world wide provide research information and outline trends in using technology to reorganize government services. Management of electronic records and the effective use of automation are the focus of these sites.

History

These links offer historical resources useful to both academic and personal studies. Lists of biographies (Kentucky and national), time tables, discussion groups, and essays on history, as well as automation of historical resources, are provided.

Historical Documents and Texts

These links provide direct access to full text historical documents, photographs, motion pictures and sound recordings which are arranged chronologically or topically and literary works which are arranged both alphabetically by author and chronologically.

Kentucky

These lists of links created by newspapers, Internet service providers, search services, and universities focus on Kentucky topics organized alphabetically by title.

Libraries

These directories of academic and public libraries, sites devoted to librarianship, lists of individual Kentucky and national libraries, and Internet tools are useful to librarians and those interested in links to libraries.

Ready Reference

These links provide some of the same tools (ie. dictionaries, encyclopedias, thesauri, Barlett's Quotations, telephone directories, translations tools, financial resources and a biographical dictionaries) that you would find at the reference desk in most libraries. Other links in this category are organized under topics such as business, current events, writing, journalism, politics, sports, science and technology. While there is overlap between this category and the "Search Services, Directories" category below, "Ready reference" more frequently provides online versions of traditional library paper based tools.

Search Services, Directories

Search services and directories like Alta Vista, Excite, Hotbot, Lycos, and Yahoo permit keyword, Boolean and phrase searching in the titles and full text of Web pages. These services also arrange recommended sites through searches alphabetically arranged by subject.

State and Local Government

These are Kentucky state and national sites of interest to state local government. Internet sites are traced geographically by commercial and government listings.

Resource pages constructed for special events

[African-American History Sources for Black History Month](#)
(Updated for 1998)

[Women's History Sources for Women's History Month](#)
(Updated for 1998)

[KDLA Home Page](#) | [Introduction](#) | [Index](#) | [Library Services](#) | [Archival Reference Services](#) | [Public Records Services](#) | [Events Calendar](#) | [What's New](#)

Last revised February 27, 1998

KDLA Links to Other Sites Archives and Preservation

[Children's
Literature and
Children's
Librarianship](#)

[Federal
Government](#)

[Genealogy](#)

[Government
Technology](#)

[History](#)

[Historical
Documents and
Texts](#)

[Kentucky](#)

[Libraries](#)

[Ready
Reference](#)

[Search
Services,
Directories](#)

[State and Local
Government](#)

- [Archival, Genealogical, and Historical Web and Gopher Sites](#) provides a list of archival sites. **Source:** Larry Lynch, Special Collections (lynchld@uwec.edu).
- [Archives & Archivists \(WWW-List\)](#) provides a LISTSERV list and Web sites for the international archival community. **Source:** Donna B. Harlan & John B. Harlan.
- [Conservation OnLine: Resources for Conservation Professionals](#) contains a *Primer on Disaster Preparedness, Management And Response: Paper-Based Materials*, as well as to links to experts at a variety of institutions and related organizations. **Source:** Stanford University.
- [Kentucky Archives and Special Collections](#) takes users directly to home pages or gopher menus for special collections and archives in Kentucky. **Source:** University of Louisville.
- [Kentucky Council on Archives](#) posts archival position vacancies and meeting notices, as well as news about Kentucky archives and archivists and related links. **Source:** University of Louisville.
- [Repositories of Primary Sources on the Web](#) is a comprehensive listing of archival web sites available, with over 900 Web sites describing holdings of manuscripts, archives, rare books, historical photographs, and other primary sources for the research scholar. **Source:** Terry Abraham of the University of Idaho.
- [RLIN AMC File](#) is a searchable catalog with over 400,000 descriptions of archival and manuscript collections, including 14,000 from Kentucky institutions known as the [Kentucky Guide Database](#).

[KDLA Home Page](#) | [Introduction](#) | [Index](#) | [Library Services](#) | [Links](#) | [Archival Reference Services](#) | [Public Records Services](#) | [Events Calendar](#) | [What's New](#)

Last updated May 1, 1998

**Additional
Topics**

**Archives and
Preservation**

**Children's
Literature and
Children's
Librarianship**

**Federal
Government**

**Government
Technology**

History

**Historical
Documents and
Texts**

Kentucky

Libraries

**Ready
Reference**

**Search
Services,
Directories**

**State and Local
Government**

KDLA Links to Other Sites Genealogy

Ancestral Trails Historical Society Source: Kentucky Village Network .
The Genealogy Page. Source: National Archives and Records
Administration.

Genealogy Resources on the Internet covers genealogical resources in the U.S. and abroad. Access to FTP, telnet, and gopher sites, as well as bulletin boards, mailing lists, news groups, and LISTSERVs is offered. **Source:** University of Michigan .

Genealogy has built-in database searching to: Kentucky Records, Kentucky Death Index for 1911-1986, Kentucky Death Index for 1987-1992, Kentucky Marriage Index for 1973-1993, and Kentucky Divorce Index for 1973, as well as numerous national databases. **Source:** The Internet Sleuth.

GENEALOGY: Part of the History/Social Studies Web Site for K-12 Teachers. Source: Exec-PC.

Kentucky Explorer Magazine offers monthly genealogical features, queries, historical photographs, links to Web sites, descriptions of books/projects completed by readers, and lists of historical societies in Kentucky. The Web site contains a sizable sampling of this subscription magazine's genealogical resources.

Kentucky Genealogical Society .

Kentucky Genealogy provides access to a growing number of county pages throughout Kentucky. **Source:** J. Murphy.

The Library of Virginia Genealogy Home Page provides numerous useful links for Kentucky genealogists, including the Library's own Digital Library Project.

Sources of Genealogical Information in the U.S.A. Source: Everton's Genealogical helper.

Tips on Genealogy. Source: U. S. Census Bureau.

World Wide Web Resources - Genealogy provides Kentucky specific databases, in addition to many of the standard genealogical sites. **Source:** University of Kentucky.

**KDLA Home Page| Introduction| Index | Library Services|Links | Archival
Reference Services| Public Records Services| Events Calendar| What's New|**

Last updated May 19, 1998

Additional Topics

KDLA Links to Other Sites History

Archives and Preservation

Children's Literature and Children's Librarianship

Federal Government

Genealogy

Government Technology

Historical Documents and Texts

Kentucky

Libraries

Ready Reference

Search Services, Directories

State and Local Government

Center for History and News Media contains Web sites lists on the following topics: Archives, Museums, and Libraries; Best of the History Web; Databases and Links; Discussion Lists; History Departments Around the World; Journals; Net Search; News; Oral History; Organizations; and Publishers. **Source:** Collaboration between George Mason University, the American Social History Project, and the Center for Media and Learning at the City University of New York.

Essays in History. **Source:** Corcoran Department of History, the University of Virginia.

Historical Demographic, Economic and Social Data of the U.S., 1790-1860. Search each of the decennial census pages by selecting variables you want to view. Choose to see county data, state data, or both. **Source:** Inter-university Consortium for Political and Social Research (ICPSR)

History provides history related resources, divided by historical period, as well as by topic. **Source:** Infoseek.

History Channel features, Great Speeches, On the Air, Historic Sites, Videos, a Trivia Quiz, Games, and Fact of the Day.

History Happens has stories from American history on music videos. **Source:** Electron Farm Publications.

H-Net: Humanities and Social Sciences On-line provides information and resources for all those interested in the Humanities and Social Sciences, and serves as a central information storehouse for H-Net's extensive network of e-mail lists.

Index of Resources for Historians contains a large list of sites arranged alphabetically by subject and name. **Source:** Department of History of the University of Kansas.

The History Computerization Project fosters the creation of a history information network for the exchange of historical information. **Source:** The Regional History Center of the University of Southern California, the Los Angeles City Historical Society, and the Conference of California Historical Societies.

Kentucky Biographies Project contains collected short biographies in a prescribed format with county and last name indexes. **Source:** Jeff Murphy and volunteers.

Kentucky Heritage Council provides Civil War and archeological resources.

Kentucky Historical Society lists facts on Kentucky counties, advertizes its publications, and offers a searchable guide to the state museums.

Notable Citizens of Planet Earth is a biographical dictionary searchable by name, date, or topic. **Source:** The Parallax Group.

World Wide Web Resources: History is grouped by general, U.S., and non-U.S. resources. **Source:** University of Kentucky.

[KDLA Home Page](#) | [Introduction](#) | [Index](#) | [Library Services](#) | [Links](#) | [Archival](#)

Additional Topics

Archives and Preservation

Children's Literature and Children's Librarianship

Federal Government

Genealogy

Government Technology

History

Kentucky

Libraries

Ready Reference

Search Services, Directories

State and Local Government

KDLA Links to Other Sites Historical Documents and Texts

American Memory features "Historical Collections for the National Digital Library." **Source:** Library of Congress.

Chronology of U.S. Historical Documents groups documents (Magna Carta through Clinton's State of the Union) by historical period. **Source:** University of Oklahoma Law Center.

Documenting the American South contains narratives on slavery, diaries/memoirs, autobiographies, and other resources on southern Americana. **Source:** University of North Carolina.

Electronic Text Archives and Resources. **Source:** International Federation of Library Associations and Institutions.

Full-Text Archives of Publications of Scholarly Societies **Source:** University of Waterloo.

Historical Text Archive is a treasure trove of digitized historical documents and links to historical documents (including the WPA texts) where you can read the terms of the German and Japanese surrender that ended WWII or a U.S. Civil War document. **Source:** Mississippi State University.

Lit Links E-Text Archives provides links to literary figures mostly from England and Canada. **Source:** University of Alberta.

Online Books Page contains Online Book Repository (OBR), a large collection of text and related materials ranging from Shakespeare and The Bible to novels, poetry, standards documents, etc, as well as references to other text archives. **Source:** John Mark Ockerbloom.

Text Archives on the Internet references a limited number of text projects. **Source:** Educational Technology Services.

Web Libraries provides a wide ranging list of data and text archives located in American universities. **Source:** Bookwatch.

[KDLA Home Page](#) | [Introduction](#) | [Index](#) | [Library Services](#) | [Links](#) | [Archival Reference Services](#) | [Public Records Services](#) | [Events Calendar](#) | [What's New](#)

Last updated February 3, 1998

Additional Topics

Archives and Preservation

Children's Literature and Children's Librarianship

Federal Government

Genealogy

Government Technology

History

Historical Documents and Texts

Libraries

Ready Reference

Search Services, Directories

State and Local Government

KDLA Links to Other Sites Kentucky

Citynet categorizes Kentucky sites into ten broad subjects. **Source:** Excite Search.

Kentuckiana Web Sites offers numerous entries in over two dozen categories. **Source:** Ric Manning of the *Louisville Courier Journal*.

Kentucky Links provides Kentucky hotspots in about a dozen categories. **Source:** *Lexington Herald Leader*/Kentucky Connect.

Kentucky County Census Tract Maps provides an alphabetized list of counties with 1990 census maps. **Source:** State Data Center, University of Louisville.

Kentucky Information In Cyberspace offers more than a dozen categories from agriculture through recreation. **Source:** Western Kentucky University

Kentucky lists numerous resources. **Source:** University of Louisville Ekstrom Library, Government Publications Department.

Kentucky's State Symbols - a Quick Guide

Regional: U.S. States: Kentucky allows you limited keyword searches to Kentucky related sites. **Source:** Yahoo Search.

University of Kentucky WWW Subject list for Kentucky provides numerous sources useful for research on Kentucky.

USA CityLink - Kentucky provides access to the Web sites of numerous Kentucky cities, as well as to the Kentucky Atlas.

Web Sites at Kentucky's K-12 Schools lists elementary, middle and high school, as well as district office Web sites in Kentucky. **Source:** Kentucky Department of Education.

[KDLA Home Page](#) | [Introduction](#) | [Index](#) | [Library Services](#) | [Links](#) | [Archival Reference Services](#) | [Public Records Services](#) | [Events Calendar](#) | [What's New](#)

Last updated February 3, 1998

Additional Topics

[Archives and
Preservation](#)

[Children:
Literature and
Children's
Literature](#)

[Genealogy](#)

[Government
Technology](#)

[History](#)

[Historical
Documents and
Texts](#)

[Kentucky](#)

[Libraries](#)

[Ready Reference](#)

[Search Services,
Directories](#)

[State and Local
Government](#)

KDLA Links to Other Sites Federal & International Government

Sections

1. [Federal Government: General Information](#)
2. [Federal Government: Legislative and Regulatory Information](#)
3. [International and Foreign Information](#)
4. [Statistical Resources](#)
5. [Additional Resources](#)

Federal Government: General Information

- [Documents Center](#) is one-stop shopping. **Source:** University of Michigan
- [Federal Web Locator](#) locates all federal agencies **Source:** Villanova University
- [INFOMINE](#) (huge collection of government resources and guides from the University of California, Riverside)
- [Regional Depository Services](#) **Source:** University of Kentucky
- [US House of Representatives](#)
- [US Senate Home Page](#)
- [White House Home Page](#)

Federal Government: Legislative and Regulatory Information

- [Congress.Org](#) offers searchable member directories and current awareness.
- [GPO Access](#) provides congressional information from the US Government Printing Office, with mirror, or [Gateway](#), sites at over 20 universities, each with their own strengths.
- [Jefferson Project](#) offers a political guide and searchable member [Directory](#) **Source:** Vox Pop
- [Library of Congress](#) (guide to the U.S. Legislative Branch)
- [Thomas](#) (search & retrieve legislation from the 103rd to current congresses. **Source:** Library of Congress.
- [U.S. House of Representatives Internet Law Library](#) specializes in laws and regulations.

← [Return](#) to the Table of Contents

International and Foreign Information

- [Country Studies](#) **Source:** Library of Congress
- [Documents Center](#) **Source:** University of Michigan
- [Foreign Governments](#) (links to individual foreign government pages)
- [International Governmental Organizations](#) (links to home pages of international organizations and agencies **Source:** University of California at Berkeley)
- [US State Department Home Page](#)
- [United Nations](#)

← [Return](#) to the Table of Contents

Statistical Resources

- [Bureau of Labor Statistics](#)
- [Business & Economics Numeric Data](#) **Source:** Larry Schankman.
- [Fedstats](#) is a search engine for government statistics and data.
- [Government Data](#) **Source:** NetEYE, Inc.
- [InfoNation](#) **Source:** United Nations.
- [US Census Bureau](#)

← [Return](#) to the Table of Contents

Additional Resources

- [Depository CD-ROM Guides](#) links to guides on government CDs. **Source:** University of Michigan; see also GODORT's [CD-ROM Documentation Project](#).
- [GPO Monthly Catalog](#) permits searches for government documents.
- [Govbot](#) is search engine for government information; see also GPO's [Pathway Services](#).
- [Migrating Government Publications](#) offers full-text documents. **Source:** University of Memphis. Or try the collection of links and library-scanned publications at the [University of Buffalo](#)
- [Resources of Use to Government Documents Librarians](#) **Source:** U.C. Berkely.
- [Sales Product Catalog](#) **Source:** GPO (also see the commercial version from [Claitor's](#))

← [Return](#) to the Table of Contents

[KDLA Home Page](#) | [Introduction](#) | [Index](#) | [Library Services](#) | [Links](#) | [Archival Reference Services](#) | [Public Records Services](#) | [Events Calendar](#) | [What's New](#)

Last updated May 19, 1998

Additional Topics

Archives and Preservation

Children's Literature and Children's Librarianship

Federal Government

Genealogy

History

Historical Documents and Texts

Kentucky

Libraries

Ready Reference

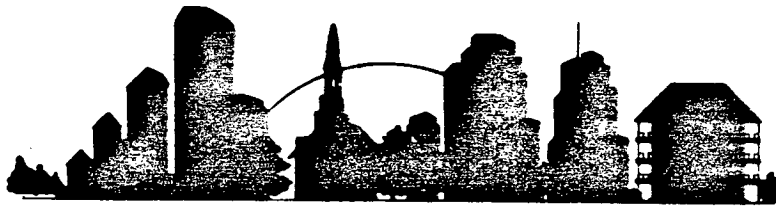
Search Services, Directories

KDLA Links to Other Sites State and Local Government

- [Area Development On-line](#) describes economic development activities by organizations in each of the fifty states.
- [Commonwealth of Kentucky WEB Server](#) points to numerous useful sites including the [State Telephone Directory](#); an alphabetized list of state agency names and topics called [State Government Information](#) and links to [Other Kentucky sites around the State on the Internet](#). **Source:** Department for Information Services.
- [Council of State Governments](#) offers lists of affiliated organizations, relevant publications, and the States Information Center (SIC) provides a free inquiry and reference service to state government officials and CSG Associates in the 50 states and five U.S. territories.
- [Government- State and Local](#) has state legislative bill search capabilities for numerous states. **Source:** The Internet Sleuth.
- [KDLA Alphabetical List of Kentucky State Agency Web Sites](#) provides a list of links by keyword in the title of the state agency. **Source:** Kentucky Department for Libraries and Archives.
- [The Lincoln Trail Region - Local Government](#) provides links to Web sites in Breckinridge, Grayson, Hardin, LaRue, Marion, Meade, Nelson, and Washington counties as part of their "Televillage" initiative.
- [NASIRE State Search](#) offers over 1,750 entries in governmental categories such as: Auditors, Criminal Justice, Education, Libraries and Records Management, and Tourism.
- [Official City Sites \(or near official \): Kentucky](#) lists numerous add free web sites that are sanctioned by municipal governments in the state of Kentucky. **Source:** Kevin & Tamie Hyde.
- [Regional Economic Information System, 1969-1995](#) provides economic data for states, counties, and metropolitan areas for 1969-1995. Statistics in the data base include: personal income by source, per-capita personal income, earnings by two digit SIC code, full and part-time employment by industry, and regional economic profiles. **Source:** Bureau of Economic Analysis and University of Virginia.
- [State and Local Governments](#) provides "meta-indexes", as well as lists of sites by state. **Source:** Library of Congress.
- [State and Local Government Webs](#) provides a list of agencies within each state. **Source:** Yahoo.

[KDLA Home Page](#) | [Introduction](#) | [Index](#) | [Library Services](#) | [Links](#) | [Archival Reference Services](#) | [Public Records Services](#) | [Events Calendar](#) | [What's New](#)

Last updated April 27, 1998



Friends of Kentucky Public Archives, Inc.

P.O. Box 4224

Frankfort, KY 40604

The Fourteenth Annual Kentucky Archives Institute

Evaluation Questionnaire July 10, 1998

We hope that this Institute has been helpful and informative for you. Please help us improve our planning for future Institutes by completing the questionnaire below:

1. To which category of the program target audience do you belong?

<input type="checkbox"/> Historian	<input type="checkbox"/> City Official	<input type="checkbox"/> Other
<input type="checkbox"/> Genealogist	<input type="checkbox"/> County Official	_____
<input type="checkbox"/> Librarian	<input type="checkbox"/> Teacher	_____

2. How and when did you learn about the Institute? How could we improve the way we promote and announce such events?

3. What did you hope to learn at the Institute?

4. What topics/speakers were most pertinent to your needs or interests?

5. How could the program have been improved?

6. What is your overall evaluation of the program?

7. What topics would you like to see covered at a future Institute?

8. Additional comments: (Feel free to write on the back).

Friends of Kentucky Public Archives, Inc.

are pleased to recognize

Jarrett Boyd

for participation in the fourteenth

Kentucky Archives Institute

July 10, 1998

*Annually co-sponsored with the
Kentucky Department for Libraries and Archives
Public Records Division
Frankfort, Kentucky*

↑
Garrison Keillor

**ROSEANN HOGAN PRESENTATION
HOGAN@QX.NET**

***** HARDWARE/CONNECTIONS**

Internet Service Provider
AOL, ATT, MCI, others

***** SOFTWARE**

Netscape/Microsoft Explorer

***** SEARCH ENGINES**

What they can and can't do

***** ACCESS TO WORLD INFORMATION**

Originally Military/Educational institutions
Business
Personal services
Travel
Stock/Banking
Books/retail
Entertainment/sports
News & weather

**** FOR FAMILY RESEARCHERS**

Searchable Databases
Genealogy Databases
EMAIL people anywhere in the world
Browse Libraries on line
Post Queries
Locate fellow researchers
Visit sites with helpful resources (articles, addresses, etc.)
Find Vendors for genealogical products
Download genealogy software demos and shareware

*all Ky census are on CD's
now. \$49.95*

OTHER ELECTRONIC RESOURCES

CD ROM DATABASES

Telephone books
Genealogical databases
census
marriage
Modern
Social Security Death Index
Family Histories and other Publications
Archives & Library Resources
Directory of Archives Repositories
Inventory of Documentary Sources (NIDS)
Maps

KDLA page
Bookmarks: see Roseann's Page + Pic

COUNTY/GOVERNMENT DATABASES

INTERNET

SEARCHIN' AND SURFIN'

SEARCHABLE DATABASES

VITAL STATISTICS - UK
OTHER STATES - OHIO, INDIANA
GEDCOM
ANCESTRY
OTHER

KYGENWEB PROJECT

COUNTY LEVEL
RESEARCH AIDS
DATABASES

CYNDI'S LIST

NEWSPAPERS

HERALD LEADER
OTHERS

LIBRARIES

Library of Congress
Special Collections

LISTSERVS & Email

ROOTS-L
KYROOTS

Send email to listserv@ukcc.uky.edu
subscribe kyroots yournames

THINGS YOU NEED TO KNOW ABOUT

Netiquette - Be Kind, Respectful, Forgiving
Viruses
Cookies
Spams
Privacy Issues

Copyright/authorship Rights

ROSEANN BEST PICS

HTTP://

- www.rootsweb.com - lots of databases
- www.CyndisList.com - best one, 29,050 links!!! * *very good resource*
- www.ancestry.com - lots of databases & free newsletter
- www.ohiohistory.org - databases and links for Ohio
- www.genhomepage.com -
- www.uky.edu - UK's vital stats database & library
- www.usgenweb.com - US GenWeb Project
- www.heritagequest.com - CD sources, Division of AGLL

Watching her speak, it's as if she's recovered from
a stroke.

Kentucky State Archives Research Room

Conditions of Use

Researchers visiting the Archives Research Room must present proper identification, complete a registration form, and agree to adhere to Public Records Division rules for use of materials. Most personal belongings, such as purses, briefcases, and coats must be stored in lockers provided for patron use, and may not be taken into the Research Room.

Once inside the Research Room, the researcher will be introduced to finding aids and procedures by a staff person. All materials must be used within the Research Room. Records are available in accordance with policy. Restrictions on the use of some materials have been imposed due to confidentiality statutes or for document preservation. Guidelines concerning the use of confidential records will be furnished on request.

All personal property, including notebooks, notes, and photocopies must be submitted for inspection before being removed from the Archives Research Room.

Printed with State Funds

The Kentucky Department for Libraries and Archives does not discriminate on the basis of race, color, national origin, sex, or disability in employment or the provision of services.
Copies of this brochure are available on audiocassette upon request.
Voice Users: (502) 564-8704/x 346
TT Users: Access the above number through the Kentucky Relay System -- 1-800-648-6056



Kentucky Department for Libraries and Archives
Public Records Division
300 Coffee Tree Road
P. O. Box 537
Frankfort, Kentucky 40602-0537

Kentucky State Archives Research Room

Kentucky Department for Libraries and Archives
Public Records Division
Archival Services Branch
Serving Kentucky's Need to Know

Kentucky, and elsewhere to gird on his armor, and fight the battle of his Country in a political arena from no sensationist. I do not wish to arouse a hurricane from its slumber, merely to witness the destruction it may bring. I have no objection for cherishing our political future. But, at present, it is my opinion, that we should realize the worst, in regard to our political future. We see

Welcome to the Kentucky State Archives

The Kentucky State Archives is the central repository for the permanent public records of Kentucky state government and many of the Commonwealth's local governments and judicial offices. The collection of private materials is generally left to other repositories. Holdings consist of approximately 95,000 cubic feet of original materials and 45,000 rolls of microfilm.

The Archives Research Room, located on the first floor of the Kentucky Department for Libraries and Archives building, provides access to these archival resources, as well as to state government agency publications, county histories, maps, newspapers, microfilmed federal records, and other materials relevant to the Commonwealth's past and present. The holdings of the Kentucky Genealogical Society, consisting primarily of family files and genealogical publications, are also available in the Archives Research Room.

A separate leaflet describing our resources is available upon request.

Archives Research Room Services

Hours

The Research Room is open Tuesday through Saturday, from 8 a.m. to 4 p.m. The Research Room is closed on all state holidays and on Saturdays immediately preceding or following state holidays.

Guides and Finding Aids

Finding aids to the Archives' organized collections are available in the Research Room. A **Guide to the Holdings of the Kentucky State Archives** contains information on the scope, content, and organization of state and local government records holdings. There are also finding aids for publications produced by Kentucky state government agencies and for federal records and other microfilmed holdings of the division.

A price list of the Public Records Division's publications, including inventories and other guides, is available. Unpublished finding aids may be photocopied for a fee.

Interlibrary Loan

The Archives is a reference and research facility and does not lend its material. Federal census population schedules for Kentucky are available on interlibrary loan through public libraries and the Kentucky Department for Libraries and Archives' State Library Services Division.

Reference Service

The staff provides very limited reference service on State Archives collections, in person or by correspondence.

Mail inquiries must include the specific type of record requested, the county or agency of origin, name to be searched, and approximate date.

Research Room staff does not perform detailed research for individual patrons. A list of persons willing to do research for a fee is available on request.

Photoduplication

Subject to preservation and copyright restrictions, copies of records are available in photocopy and microfilm. A photocopier and several microprinters are located in the Research Room for public use. Original archival material, however, must be copied by the staff.

Copy requests in excess of 25 pages will be filled as staff time allows, usually within four weeks of a request. Researchers may be required to accept microfilm copies of records if original documents are too fragile or too voluminous to photocopy. Duplication policies and costs are available from the Research Room on request.

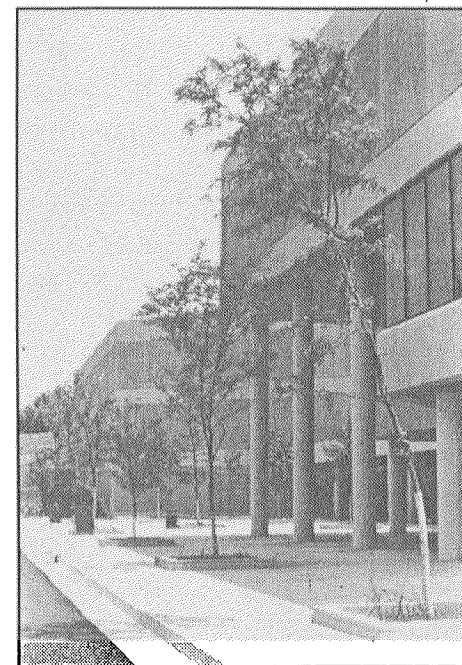
Other Services

The availability of many records, particularly those of local governments, varies greatly. Out-of-town researchers should contact the Archives Research Room before visiting to determine if needed materials are on hand.

Please address inquiries to: Archives Research Room, Public Records Division, Kentucky Department for Libraries and Archives, P.O. Box 537, Frankfort, KY 40602-0537, or telephone (502) 564-8704.

If you have ever sought a copy of a birth certificate, used a court order book, recorded a deed, or contacted a local or state government agency, then the Friends of Kentucky Public Archives, Inc. is working for you. Please be a Friend... Help make a future for our past.

*We invite you
to
join*



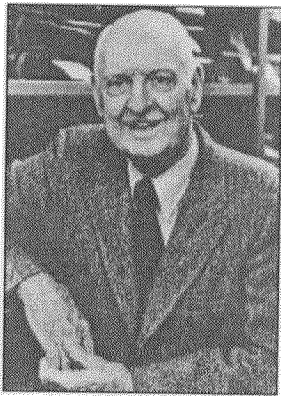
THE FRIENDS OF
KENTUCKY PUBLIC
ARCHIVES

Help ensure a future for our past

ABOUT THE FRIENDS

The Friends of Kentucky Public Archives, Inc., is a group of private citizens concerned with helping the Kentucky State Archives fulfill its role as caretaker of Kentucky's government records. The group, a membership organization open to all, supports the sound management, preservation, and use of Kentucky's historic public records. It serves as an advocate for the State Archives and helps it secure funding for needed programs and equipment acquisition.

Won't you join us in our work to preserve and provide access to these priceless records? Through a membership or tax-deductible gift, your



*Kentucky's
Historian Laureate,
Dr. Thomas D. Clark*

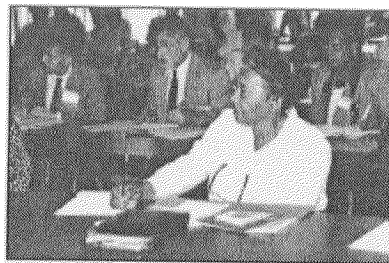


*Clark Interns
explore exciting
opportunities at
the State Archives*

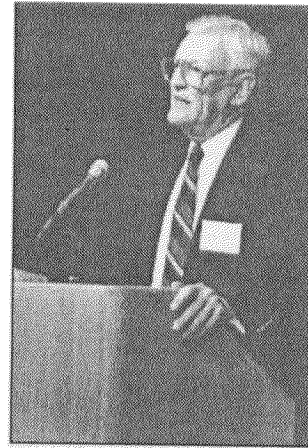
generosity will help make possible the following services of the Friends:

- the Thomas D. Clark Endowment Fund provides internships in archival administration in honor of Dr. Clark, a tireless advocate for the State Archives for over sixty years;
- an annual Kentucky Archives Institute trains citizens in public record research;
- an annual Public Archives Symposium allows scholars to discuss their research in government records and how these resources made their work possible;
- grants for needed equipment and information resources;
- regional workshops, special lectures, County Heritage Day visits to the State Archives, and exhibits;
- and a forum for a discussion of public records needs not funded by the state budget.

*Kentucky
Archives
Institute
participants
learn how to use
public records to
meet their
information
needs*



*Public Archives
Symposium speaker
Dr. Robert Remini,
speaking of his
research on Henry
Clay and Andrew
Jackson*



About the State Archives

The State Archives is the central repository for Kentucky government records of enduring value. This remarkable facility houses over 96,000 cubic feet of original records and 47,000 rolls of microfilmed records available for public use. These holdings, dating from 1780, are some of the most significant original records available to document the Commonwealth's history, including:

- the public papers of Kentucky's governors, from 1792 to the present;
- legislative records;
- judicial records from Kentucky's circuit, appellate, and supreme courts;
- a wide variety of local government records, such as deeds, marriages, and wills;
- copies of federal records, such as Kentucky census, military, and Works Progress Administration records;
- and state government agency records and publications.

IS THERE A FUTURE FOR OUR PAST?

THERE CAN BE,

WITH YOUR HELP

Yes, I would like to renew my membership in/become a member of the **Friends of Kentucky Public Archives, Inc.**

My check for _____ made payable to the Friends of Kentucky Public Archives, Inc., is enclosed. Membership benefits include an annual calendar, a quarterly newsletter and invitations to workshops, special events, the Kentucky Archives Institute, the Public Archives Symposium and the annual meeting. Gifts to the Friends beyond the basic membership are tax deductible.

Name _____

Address _____

City _____ State _____ Zip _____

Telephone _____

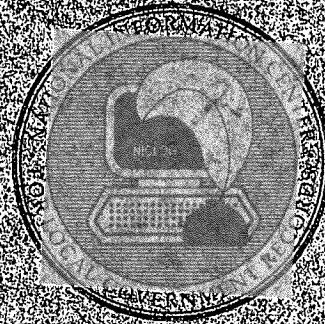
Membership levels: _____\$15 Individual or Family _____\$25 Corporate _____\$250 Life

I would like _____ additional calendars @ \$6 plus \$2.00 for shipping/handling.

Please clip and mail to: Friends of Kentucky Public Archives, Inc., Box 4224, Frankfort, Kentucky 40604



Guardians of the Public Record



Titles to property, voter registration lists, building permits, and marriage licenses, school, court and tax records.

Each is a public record. Public records not only support the immediate needs of government—administrative, legal, fiscal—and insure its continuity, but they protect the interests and rights of the people. Maintained over time, these records preserve the history of your community.

As local government officials, you are entrusted with making and keeping public records. Managing this dynamic repository of information is both a challenge and an enormous responsibility.

As guardians of the public record, the work you do is vitally important to your community.

Public records—the information they contain—constitute a valuable resource for every agency, department and office of local government. Like other key resources—people, money and material—records require good management to be useful in a way that's cost-effective.

You may be wondering if you can afford to provide management for your records.

But, the fact is, you can't afford not to.

Why?

First of all, by managing the flow of records received or created by government every day—so you know exactly where to keep each record, in what order, and for how long—the cost of running government goes down.

At the same time, when you—and the public—are able to find records faster and easier, government efficiency goes up.

In short, you become a more effective administrator of the public business entrusted to you. And you'll use less staff time, equipment and space to do it. Space is a critical need in government record-keeping. Many valuable records end up in basements or attics. But the solution to this problem is not more space. And it's not more personnel, either.

It's records management.



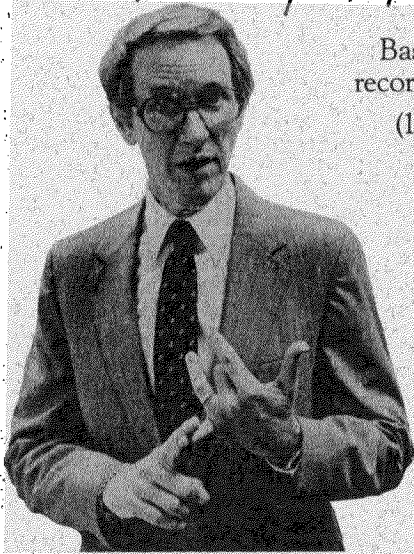
Profiting from Records Management

What is a Records Management System?

Records management gives local government administrators the methods for controlling how records should be created, organized, kept, used and preserved—or destroyed—efficiently and economically. It enables management to get control of—and keep control of—whatever documentation local government produces or handles, regardless of the recording medium.

Public records aren't just paper. Today, audio tapes, microfilm, optical discs, photographs, computer output-microfilm (COM), computer tapes and discs are all public records, and must be managed.

More Specifically . . .



Basically, there are four steps involved in getting a records management program underway:

(1) Begin by finding out *what* you're required to keep by law, and *how long* you're required to keep it.

—Review your state laws and local ordinances governing public records.

Contact your state agency responsible for archives and records management. It may already have developed records management guidelines that you can benefit from. Many of these agencies offer advice and technical services to help local officials get their records management programs underway and keep them going.

management is concerned with the entire "life-cycle" of records—from their creation, to their final disposition—employing time-honored management techniques such as files organization and management, correspondence control, forms design and micrographics.

The benefits of these records management techniques extend throughout the entire work process. They can help you:

- Increase the speed of routine transactions with the public
- Make recording, transcribing and using minutes easier
- Access required information with greater accuracy
- Comply with freedom-of-information and privacy laws
- Determine if current record systems need improvement

And one more thing: in addition to making your office more efficient and productive, the techniques of records management are the key to a successful transition to the new office automation technologies.

Getting Started

Establishing a records management program may seem like a large task to tackle.

(2) Find out what types of records you have, how many of each type, and where they are located.
—Determine what records you have.
Know what the legal, financial and administrative requirements are governing each type of record.

(3) Decide which records you can destroy, which you need to retain in a low-cost records center, which you should microfilm, and which you must preserve because of their administrative, legal or historical value.
—Evaluate your records.

(4) Using your evaluation, set up guidelines for the physical management of each type of record.
—Establish Records Control Schedules.
A Records Control Schedule—when approved by the government, and, if required, by the appropriate state agency—establishes a routine procedure for maintaining records, so you know where each is kept and for how long.

A Schedule provides for keeping documents you need for current activities in or near the office. Other records you can probably store somewhere else—just as long as they are accessible, well-protected and in good order.

Lastly, a Schedule should identify, for permanent preservation, historically valuable records.

Beyond the Basics

Records management doesn't stop here.

It continues to look for ways to improve the recording and record-keeping process. Records

But remember, you're not alone in facing up to the problem. Counties and municipalities all over the country—large and small, urban and rural—have records management programs working for them now. And many of them got started simply by asking for a little help.

Help... and where to find it

No matter what your limitations of budget, time, or staff, you *can* get a public records management program underway.

And here are three sources that can help you get started:

- (1) Contact your state's archival and records management agency for information about public records laws. Ask their advice in starting a records management program.
- (2) Ask your professional associations what technical assistance they have to offer.
- (3) Write or call the National Information Center for Local Government Records (NICLOG).

NICLOG

American Association for State and Local History
172 Second Avenue, North
Suite 102
Nashville, Tennessee 37201
(615) 255-2971

Your state archives, professional organizations and NICLOG all have publications that will help you plan and implement a records management system.

Guardians of the Public Record

Setting your records straight requires a commitment of both staff time and dollars.

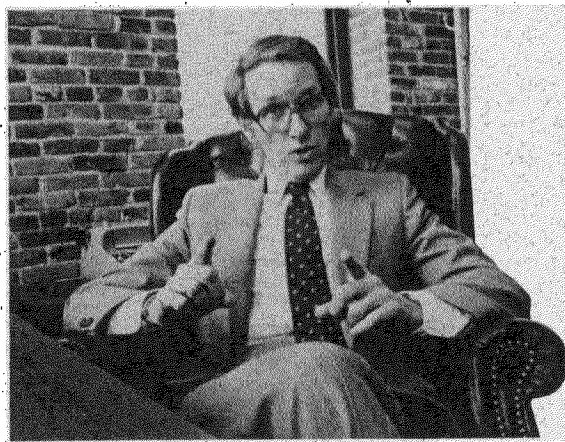
But you'll see your efforts pay off right from the start. Records management saves time, effort and tax dollars.

Yet, your records—the information they contain—are invaluable to government and its citizens.

The documents entrusted to you—that are your legal responsibility to maintain—are the recorded source of your community's heritage.

You are the guardians of your community's past, of your community's memory, and of your community's future.

You can't put a price on that.





This publication is a product of NICLOG, the National Information Center for Local Government Records, whose policy board includes representatives from the

Society of American Archivists
Organization of American Historians
National Center for State Courts
National Association of Government Archives and
Records Administrators
National Association of County Recorders and
Clerks
International Records Management Council
International Institute of Municipal Clerks
International City Management Association
Association of Records Managers and
Administrators
American Association for State and Local History

This publication was supported by grants from the National Historical Publications and Records Commission and the Andrew W. Mellon Foundation.